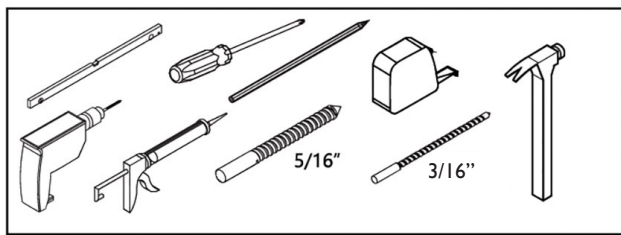


**Double
Bypass
Enclosure**



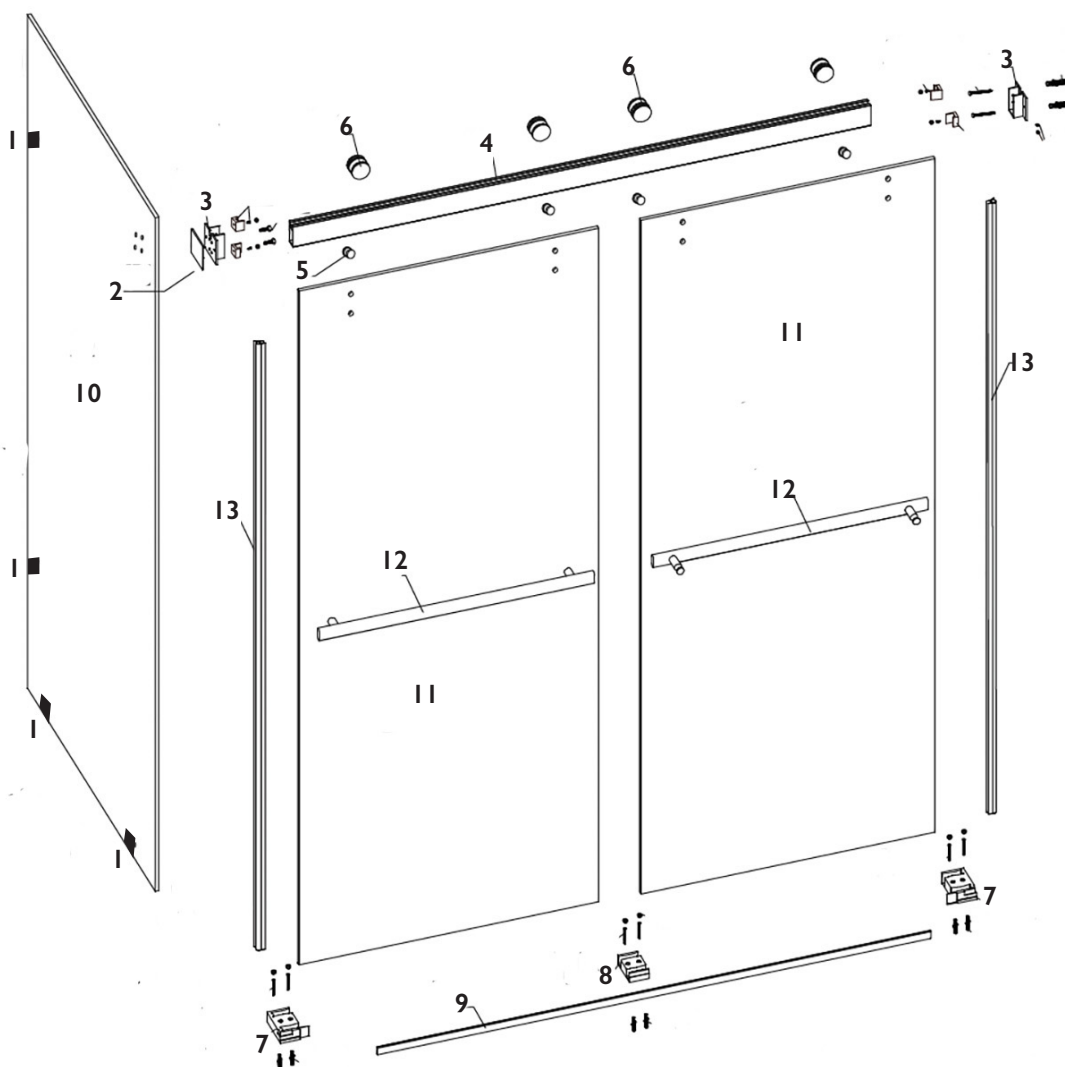
Tools Needed

Required Tools:

To install your shower enclosure, you will need the following:

- Level
- 5/16" Drill Bit
- 3/16" Carbide Drill Bit (for tile walls)
- Phillips Screwdriver
- Silicone
- Hammer
- Tape Measure

NOTE: The shower door is reversible, side panel can be installed at left or right side without modifications.



- 1- CGTW x4
- 2 - CA-CAPRET19
- 3 - CA-CAP-WALL KITx2
- 4 - SL-CAP1501
- 5 - CA-CAP952 x4

- 6 - CA-CAP501EIX19 x4
- 7 - CA-CAP-BOTTOMBUM x2
- 8 - CA-CAP 920-2
- 9 - SL-CAP 1502
- 10 - PANEL GLASS x1

- 11 - DOOR GLASS x2
- 12 - CA-CAP-TB x2
- 13 - SK-SKYPVCD 19 x2

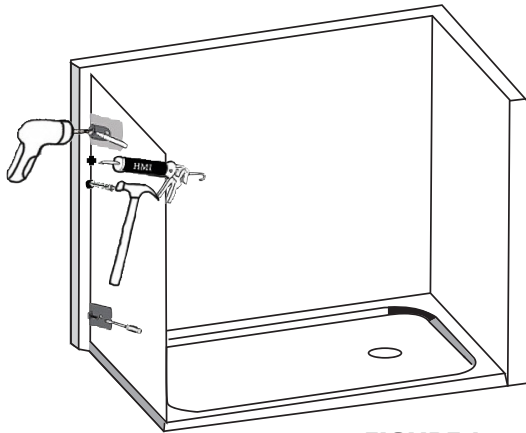


FIGURE 1

STEP 1

(See Figure 1)

1. First set the stationary panel in place. Make sure the panel is the correct height and the correct distance from the wall (slider distance)
2. The panel should be plum and level.
3. Mark the position of wall clips & bottom clips,
4. Drill holes & clean out the debris
5. Fill with silicone
6. Then insert anchor.
7. Attach the clamps to the wall & floor:

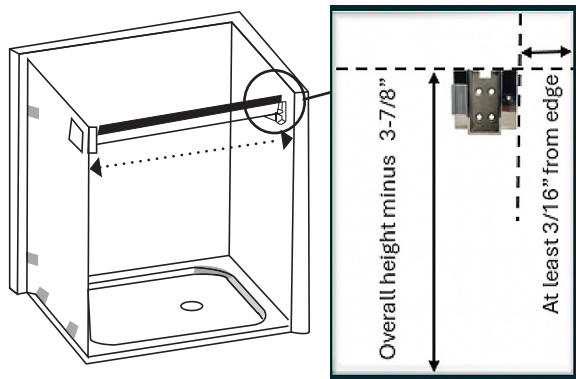
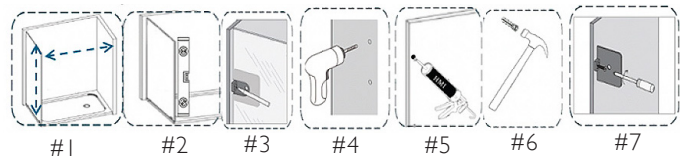


FIGURE 2

STEP 2

(See Figure 2)

1. Place a gasket on each clamp so it is between the glass and clamp, then set the panel in place. Tighten the clamps to the glass, making sure the gasket is between the glass and clamp.
2. Attach the header clamp to the glass panel using the 90° plate. (CACAPRET19)
3. Attach the other header clamp to the wall, making sure it is in line with the header clamp on the panel and both clamps are placed 3-7/8" (to the top) less than total height.
4. Cut header 5/16" less than slider opening, then slider it into the wall and panel clamps. Make sure the header is level.



STEP 3

1. Cut dam strip (SL-CAP1502) 31 1/8" less than opening between wall and 90° glass panel.
2. Slide the center guide onto the dam strip, then slide the side bumpers on both ends of the dam strip.
3. Line the screw holes of the center guide and side bumpers with the center of the wall clamps, making sure the center guide is centered. Mark holes, remove the dam strip, center guide and side bumpers.
4. Drill holes & clean out the debris, fill with silicone and insert the screw anchors.
5. Replace the dam strip, center guide and side bumpers, then screw down the center guide and side bumpers.

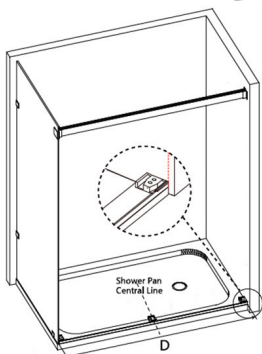
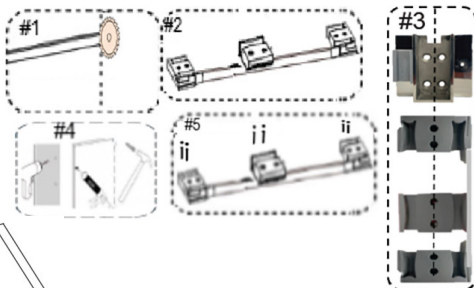


FIGURE 3

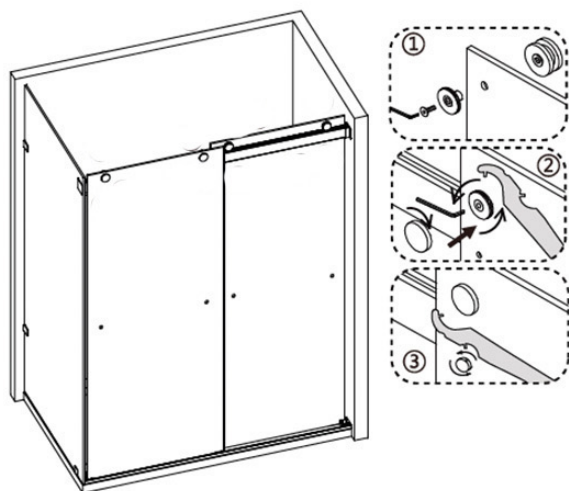


FIGURE 4

STEP 4

(See Figure 4).

1. Disassemble rollers, then apply them to the glass and tighten.
2. Hang the glass on the header, being sure that they are in the center guide. Adjust the rollers to make sure the glass is plumb.
3. Install the anti-jump bumpers.

NOTE: Thread locker (Loctite® brand or similar) is **REQUIRED** for all threads on rollers and anti-jumps. Be sure to follow the manufacturers recommendations for cure times when making final adjustments. Thread locker is **NOT** included in the kit but is readily available at many hardware stores and from many online retailers.

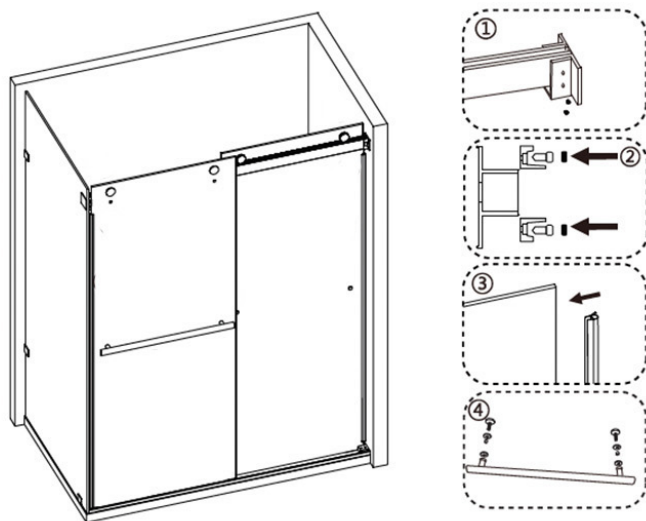


FIGURE 5

STEP 5

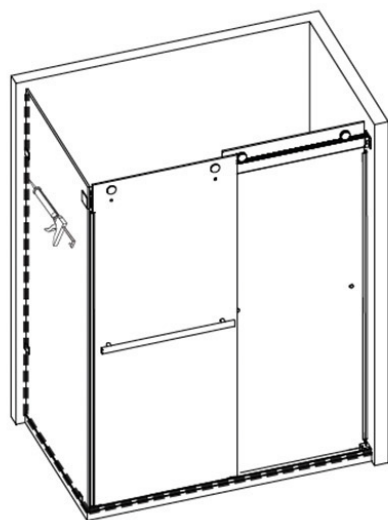
(See Figure 5).

1. Screw the header to the header clamps.
2. Install bumpers on both header clamps.
3. Slide the PVC door bulb seal.
4. Apply the towel bars.

STEP 6

(See Figure 6).

Apply good quality silicone sealant.
Clean all joint areas as recommended.



Allow 24 hours for sealant to
set for before first shower

FIGURE 6